

Ironwood e-Panel

BIPV Solar Roof

Building Integrated Photovoltaic

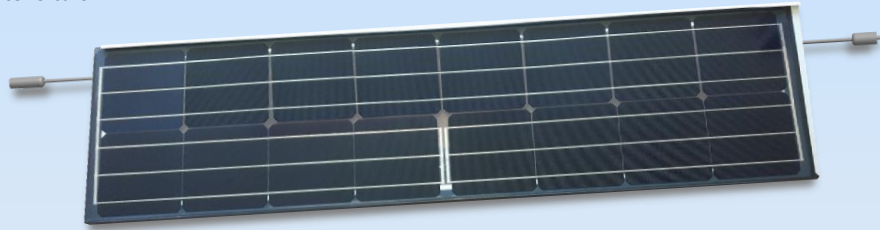


*Power
and
Beauty
Combined*

Ironwood e-Panel

BIPV Solar Roof

Building Integrated Photovoltaic



Key Features

- Trusted Monocrystalline solar technology
- PVDF coated steel roofing panel
- available in Rare standard colours
- fully integrates with Ironwood Shake metal roof system
- fully tempered low iron glass surface

Technical Specs:

- 16 cells, 1 bypass diode
- P Max 80 Watts per panel at STC
- 600V System Max
- Fire Classification – Class A per UL 790
- 25 year power warranty
- Safety tested to meet UL 1703 / ULC ORD C1703

FAQ's

- **Are there any financial incentives for installing solar in my area?**

The availability of incentives is constantly changing. It is quite possible that you will find some type of rebate for your area. You will need to check with your local authorities. Be sure to check all levels (utility, municipal, state/provincial and federal). Some websites to visit for further information on this:

Canada <https://www.nrcan.gc.ca/make-your-home-more-energy-efficient/23443>

USA www.energystar.gov/about/federal_tax_credits and/or www.dsireusa.org/

- **Can I sell excess energy back to my utility company?**

Yes, in many circumstances you can. This is called net-metering and you should check with your local utility company to confirm their specific arrangement.

- **How much roof space is required?**

This depends on the amount of energy you wish to generate. It is approximately 100 sq. ft. per 1kW. If you wanted to install a 5kW system you would need approximately 500 sq. ft. of south facing, unshaded roof space.